

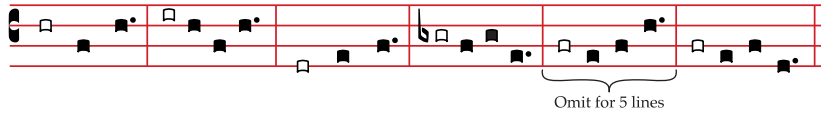
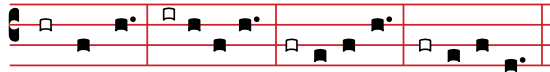
The top staff has four measures, and is for stanzas with 2 to 4 lines.
For 2-line stanzas, use the first and fourth (last) measures.
For 3-line stanzas, use the first, second and fourth (last) measures.
For 4-line stanzas, use all four measures.

The bottom staff has six measures, and is for stanzas with 5 to 6 lines.
For 5-line stanzas, omit the section marked "omit for 5 lines"

ST. MEINRAD PSALM TONES

Based on the Eight Gregorian Modes

Mode 5

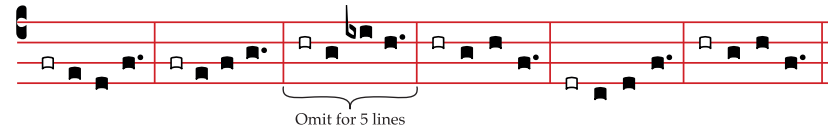
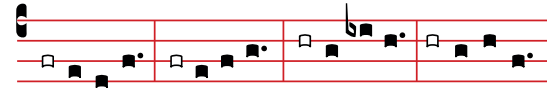


© Saint Meinrad Archabbey. All Rights Reserved.

ST. MEINRAD PSALM TONES

Based on the Eight Gregorian Modes

Mode 6

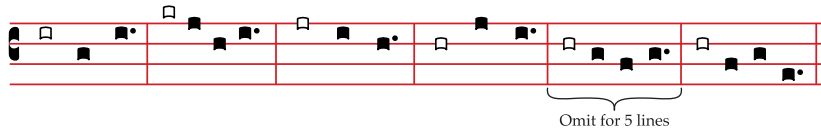
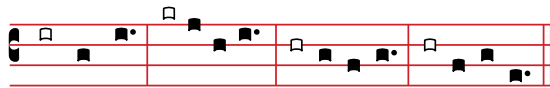


© Saint Meinrad Archabbey. All Rights Reserved.

ST. MEINRAD PSALM TONES

Based on the Eight Gregorian Modes

Mode 7

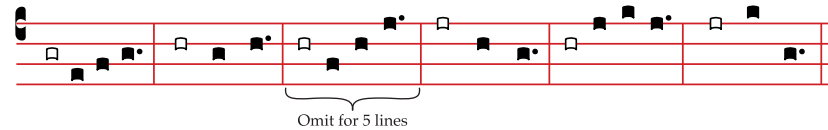
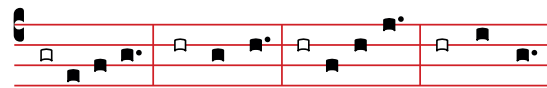


© Saint Meinrad Archabbey. All Rights Reserved.

ST. MEINRAD PSALM TONES

Based on the Eight Gregorian Modes

Mode 8



© Saint Meinrad Archabbey. All Rights Reserved.